

ERNST
INDUSTRIEANLAGEN
GMBH

Specialized in used heavy machine tools from

WALDRICH SIEGEN **WALDRICH COBURG**

Dipl. Ing. Elmar Ernst Industrieanlagen GmbH
Hüttenfeld 8 (street) D - 51427 Bergisch Gladbach (city)
Tel.+49 2204 9844010 Fax +49 2204 9844011 mob +49 172 1520295
email: maschinen@web.de www.ernstmachines.de

CNC Turbine/Roll Lathe WALDRICH SIEGEN, Model DH 1600/35 CNC x 12000-1 YOM 1989, with hydrostatic guide ways in z and x axis, initial start up 4/1990 option: new 3 axis CNC control SINUMERIK 840 DsL, new electric, new wiring, new tail stock , ser. no. 13.152



machine at production place GE in Birr/Switzerland
the machine was only used in finishing of turbine shafts and is in a new mechanical condition.
We do guarantee a new machine accuracy!

techn. details

- Hydrostatic guide ways in z axis
- Hydrostatic guide ways in x axis
- Hydrostatic worm drive in z axis
- C axis in face plate
- Workpiece measuring in upper carriage

Specialized in used heavy machine tools from



ERNST
INDUSTRIEANLAGEN
GMBH

WALDRICH SIEGEN **WALDRICH COBURG**

Dipl. Ing. Elmar Ernst Industrieanlagen GmbH
Hüttenfeld 8 (street) D - 51427 Bergisch Gladbach (city)
Tel.+49 2204 9844010 Fax +49 2204 9844011 mob +49 172 1520295
email: maschinen@web.de www.ernstmachines.de



working area		
max. turning-Ø over saddle	mm	1.600
distance between centers	mm	12.000
max. work piece lengths	mm	11.800
max. work piece weight	t	40

head stock		
power at main spindle	kW	136
revs at face plate	min-1	1 – 240
step 1	min-1	1 – 60
step 2	min-1	4 – 240
base speed	min-1	15

face plate with C axis with clamping system		
face plate - Ø	mm	1.200
clamping area outside, min – max	mm	105 – 1.000
no. of clamping jaws	no.	4
max. torque at face plate	Nm	80.000
center angle	degree	60

carriage		
no. of carriages	no	1
travel way Z - axis	mm	13.500
travel way X - axis	mm	700
traverse X - axis	mm/min	0 – 4.500
traverse Z - axis	mm/min	0 – 4.500
rapid traverse X - axis	mm/min	4.500
rapid traverse Z - axis	mm/min	4.500
upper carriage with measurement system for work pieces		

The machine doesn't have a tailstock, because the user produced the turbine shafts on 2 stadies

Option 1: a new tailstock

tailstock		
dia. of quill	mm	360
movement of quill	mm	100

measurements		
machine lengths	mm	20.000
machine widths	mm	5.000
machine heights, above floor level	mm	2.400
machine weight	t	105
electrical conditions	V/Hz	380/50

Specialized in used heavy machine tools from



ERNST
INDUSTRIEANLAGEN
GMBH

WALDRICH SIEGEN **WALDRICH COBURG**

Dipl. Ing. Elmar Ernst Industrieanlagen GmbH
Hüttenfeld 8 (street) D - 51427 Bergisch Gladbach (city)
Tel.+49 2204 9844010 Fax +49 2204 9844011 mob +49 172 1520295
email: maschinen@web.de www.ernstmachines.de



hydrostatic steadies

no. of steadies	no.	2
clamping area	mm	125 - 650
max. work piece weight	t	20
no. of quills	no.	3
rapid traverse	mm/min	2.150

accessories

- 1 piece of chip conveyor
- 2 pieces of hydrostatic steadies, with 3 quill, 20 t each, 200 – 650 mm
- 1 piece conventional steady
- 1 integrated measurement system in upper carriage for workpiece measurement
- integrated C axis in face plate with clamping

delivery conditions

delivery time

the machine as/where is direct after order
remanufacturing and assembly after 5 month

payment

100 % for the machine as/where is via irrevocable LC
70 % down payment for the option
20 % at beginning of installation
10 % after commissioning against a bank guarantee

With best regards





Specialized in used heavy machine tools from

WALDRICH SIEGEN **WALDRICH COBURG**

Dipl. Ing. Elmar Ernst Industrieanlagen GmbH
Hüttenfeld 8 (street) D - 51427 Bergisch Gladbach (city)
Tel. +49 2204 9844010 Fax +49 2204 9844011 mob +49 172 1520295
email: maschinen@web.de www.ernstmachines.de



upper carriage with tool holder and work piece measurement



Specialized in used heavy machine tools from

ERNST INDUSTRIEANLAGEN GMBH **WALDRICH SIEGEN** **WALDRICH COBURG**

Dipl. Ing. Elmar Ernst Industrieanlagen GmbH
 Hüttenfeld 8 (street) D - 51427 Bergisch Gladbach (city)
 Tel. +49 2204 9844010 Fax +49 2204 9844011 mob +49 172 1520295
 email: maschinen@web.de www.ernstmachines.de

headstock, face plate with C axis and clamping, hydrostatic steady



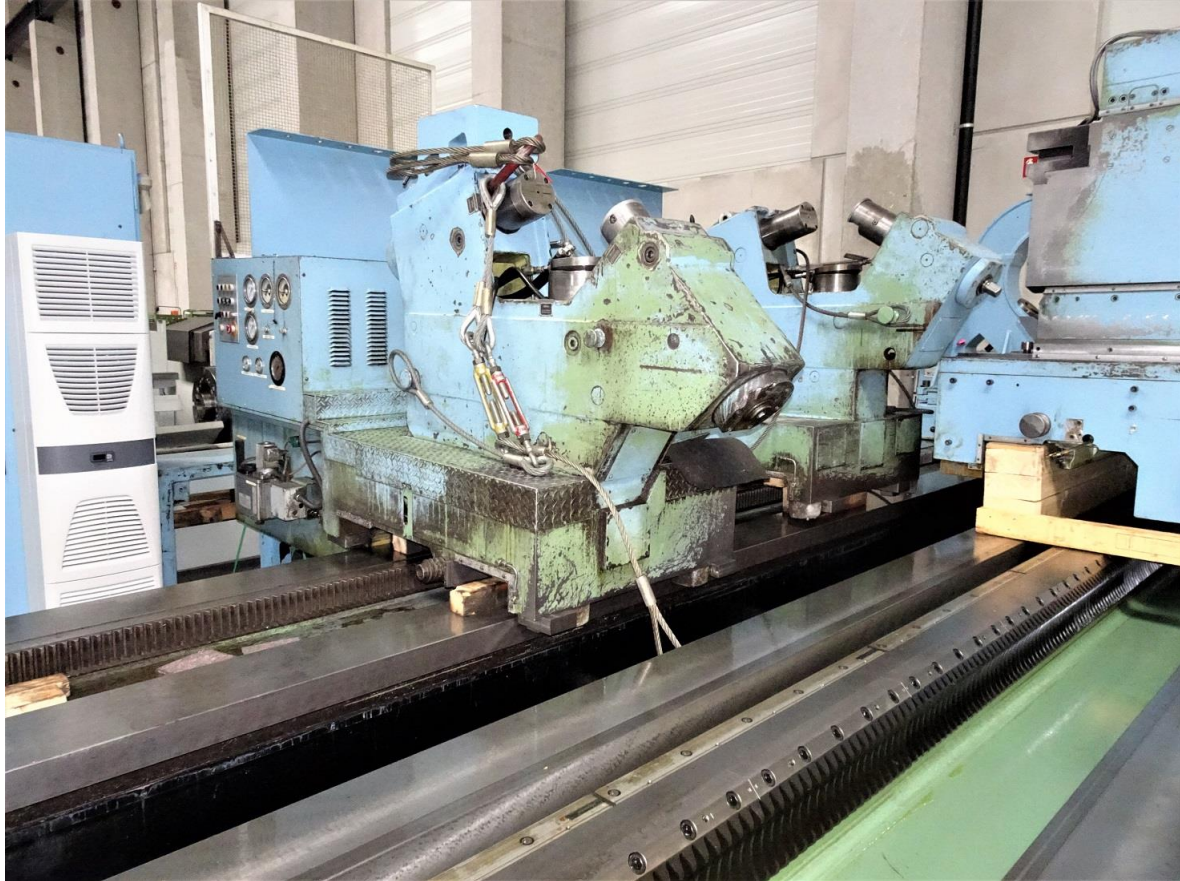
used as turbine rotor finish lathe

ERNST
INDUSTRIEANLAGEN
GMBH

Specialized in used heavy machine tools from

WALDRICH SIEGEN **WALDRICH COBURG**

Dipl. Ing. Elmar Ernst Industrieanlagen GmbH
Hüttenfeld 8 (street) D - 51427 Bergisch Gladbach (city)
Tel. +49 2204 9844010 Fax +49 2204 9844011 mob +49 172 1520295
email: maschinen@web.de www.ernstmachines.de

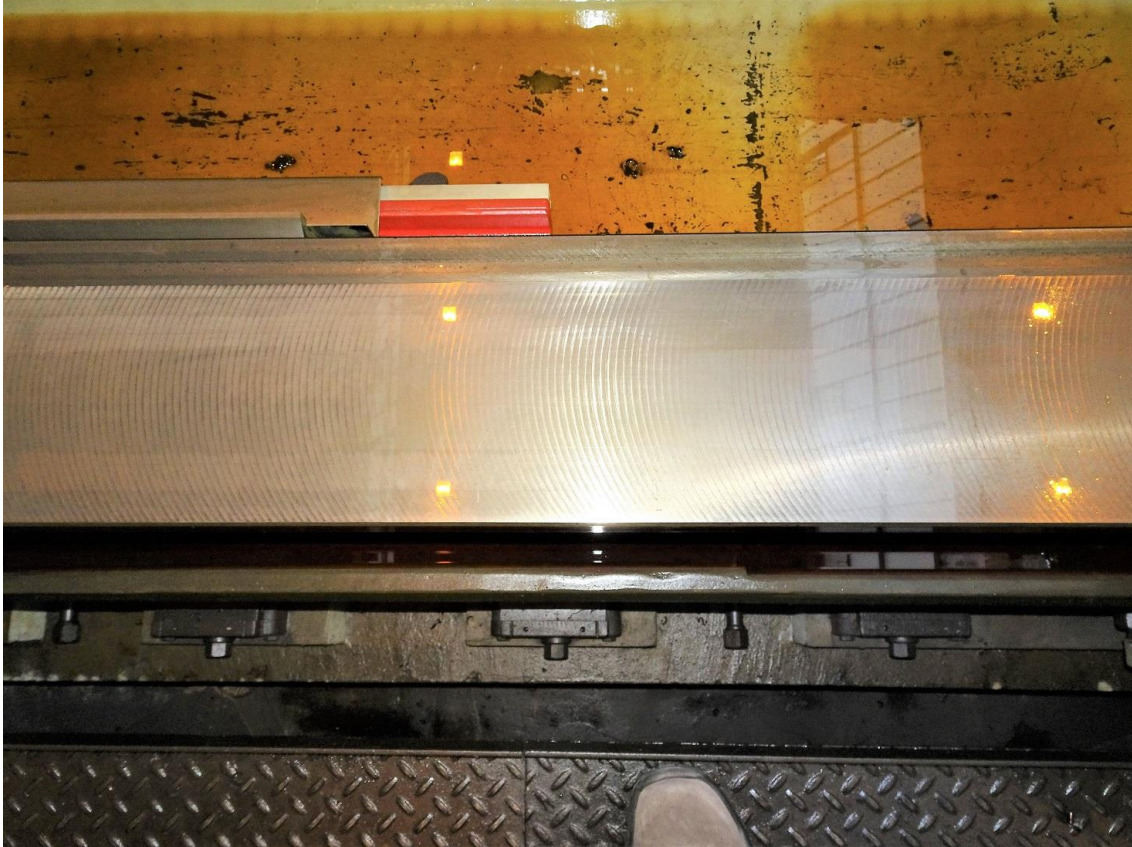


hydrostatic steadies with 3 quills per steady

Specialized in used heavy machine tools from
WALDRICH SIEGEN **WALDRICH COBURG**

ERNST
INDUSTRIEANLAGEN
GMBH

Dipl. Ing. Elmar Ernst Industrieanlagen GmbH
Hüttenfeld 8 (street) D - 51427 Bergisch Gladbach (city)
Tel. +49 2204 9844010 Fax +49 2204 9844011 mob +49 172 1520295
email: maschinen@web.de www.ernstmachines.de

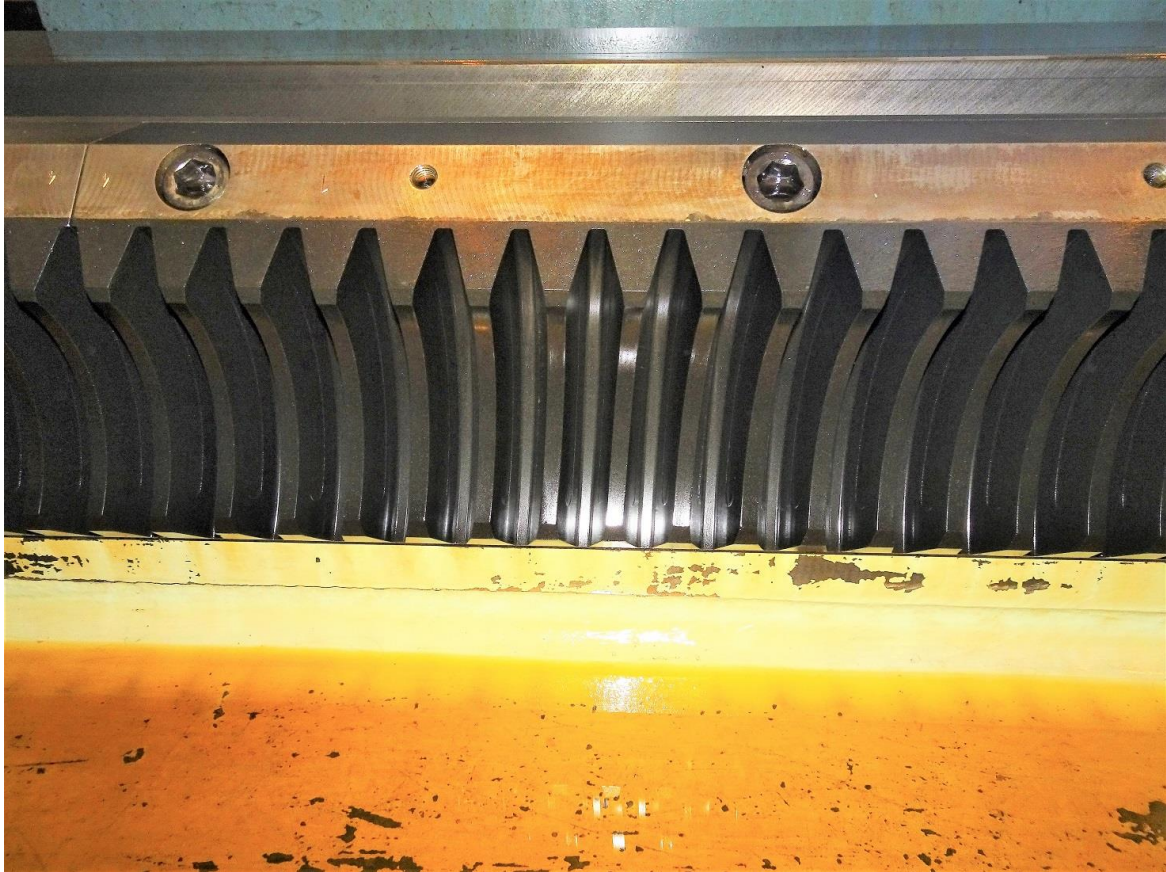


hydrostatic guide ways in X and Z axis

Specialized in used heavy machine tools from
WALDRICH SIEGEN **WALDRICH COBURG**

ERNST
INDUSTRIEANLAGEN
GMBH

Dipl. Ing. Elmar Ernst Industrieanlagen GmbH
Hüttenfeld 8 (street) D - 51427 Bergisch Gladbach (city)
Tel. +49 2204 9844010 Fax +49 2204 9844011 mob +49 172 1520295
email: maschinen@web.de www.ernstmachines.de



hydrostatic worm drive for the carriage

Specialized in used heavy machine tools from
WALDRICH SIEGEN **WALDRICH COBURG**

ERNST
INDUSTRIEANLAGEN
GMBH

Dipl. Ing. Elmar Ernst Industrieanlagen GmbH
Hüttenfeld 8 (street) D - 51427 Bergisch Gladbach (city)
Tel.+49 2204 9844010 Fax +49 2204 9844011 mob +49 172 1520295
email: maschinen@web.de www.ernstmachines.de

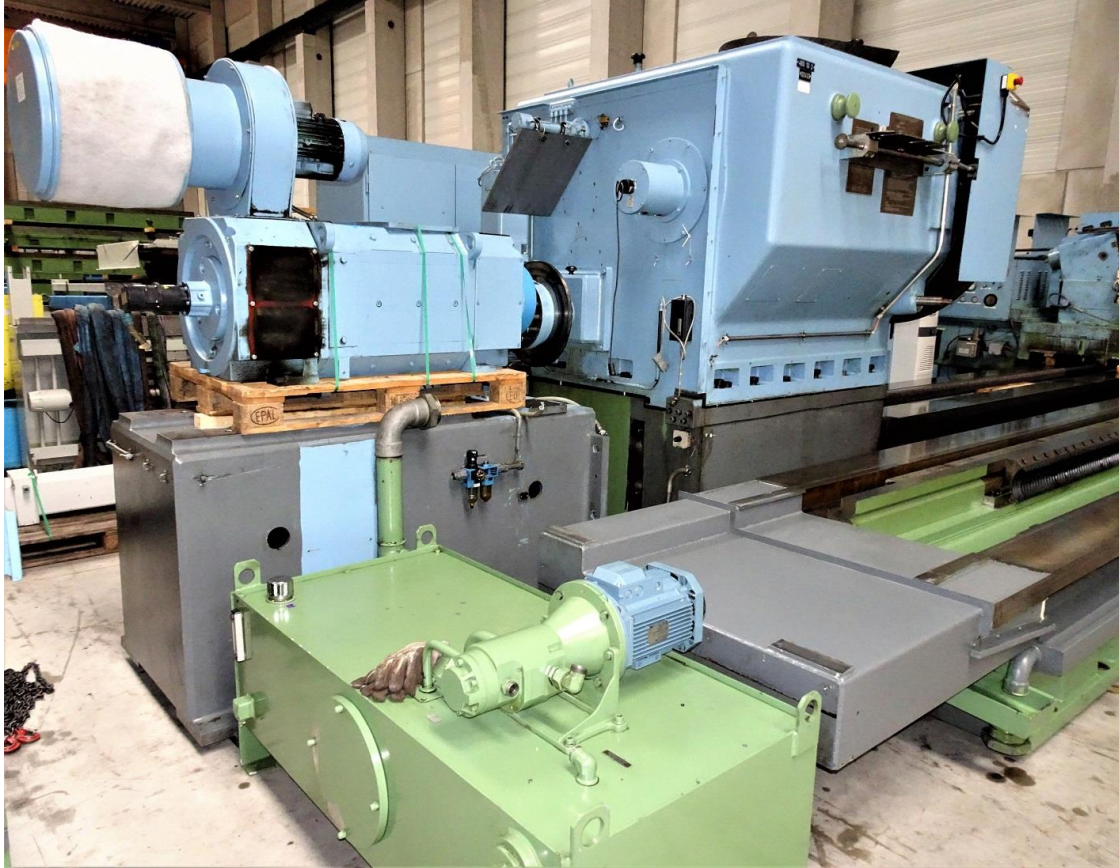


guide ways and hydrostatic worm drive like new

ERNST
INDUSTRIEANLAGEN
GMBH

Specialized in used heavy machine tools from
WALDRICH SIEGEN **WALDRICH COBURG**

Dipl. Ing. Elmar Ernst Industrieanlagen GmbH
Hüttenfeld 8 (street) D - 51427 Bergisch Gladbach (city)
Tel. +49 2204 9844010 Fax +49 2204 9844011 mob +49 172 1520295
email: maschinen@web.de www.ernstmachines.de



**the machine was only used in finishing and is in a new mechanical condition.
we guarantee a new machine accuracy!**

Specialized in used heavy machine tools from
WALDRICH SIEGEN **WALDRICH COBURG**

ERNST
INDUSTRIEANLAGEN
GMBH

Dipl. Ing. Elmar Ernst Industrieanlagen GmbH
Hüttenfeld 8 (street) D - 51427 Bergisch Gladbach (city)
Tel. +49 2204 9844010 Fax +49 2204 9844011 mob +49 172 1520295
email: maschinen@web.de www.ernstmachines.de



option 1: new tailstock

Specialized in used heavy machine tools from
WALDRICH SIEGEN **WALDRICH COBURG**

ERNST
INDUSTRIEANLAGEN
GMBH

Dipl. Ing. Elmar Ernst Industrieanlagen GmbH
Hüttenfeld 8 (street) D - 51427 Bergisch Gladbach (city)
Tel. +49 2204 9844010 Fax +49 2204 9844011 mob +49 172 1520295
email: maschinen@web.de www.ernstmachines.de



machine stored in our warehouse in Freudenberg

Specialized in used heavy machine tools from

WALDRICH SIEGEN WALDRICH COBURG

Dipl. Ing. Elmar Ernst Industrieanlagen GmbH
 Hüttenfeld 8 (street) D - 51427 Bergisch Gladbach (city)
 Tel.+49 2204 9844010 Fax +49 2204 9844011 mob +49 172 1520295
 email: maschinen@web.de www.ernstmachines.de





machine in top condition, like new



option 2: new CNC control SINUMERIK 840 DsL



option 2: new electric cabinet

Specialized in used heavy machine tools from
WALDRICH SIEGEN **WALDRICH COBURG**

ERNST
INDUSTRIEANLAGEN
GMBH

Dipl. Ing. Elmar Ernst Industrieanlagen GmbH
Hüttenfeld 8 (street) D - 51427 Bergisch Gladbach (city)
Tel.+49 2204 9844010 Fax +49 2204 9844011 mob +49 172 1520295
email: maschinen@web.de www.ernstmachines.de



Warehouse address:
Alte Eisen Strasse 2 - 24 (street)
D - 57258 Freudenberg / Germany
(near the city of Siegen)

take high way no. 45 (Dortmund to Gambacher Cross), exit Freudenberg,
from direction Dortmund, turn left, at the traffic light turn left, then direct left again,
from direction Gambacher Cross, turn right, at the traffic light turn left, then direct left again,
Spedition Bender, first building on the left side, door 24